

Q 系列二位四通滑柱式换向阀

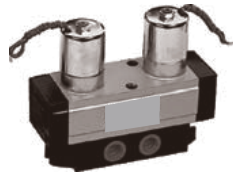
Series 4/2 ways solenoid spool valve

Q24DH

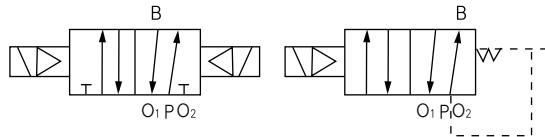
图形符号 symbols



Q24HD-□ (圆头) metal pilot



Q24HD₂-□ (圆头) metal pilot



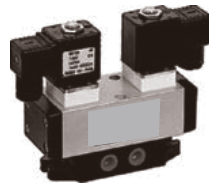
产品特点 Features

二位四通滑阀是气动装置中改变气流方向的基本元件。也是最具历史悠久的传统产品。

4/2-ways spool valve is the basic element for changing air flow direction in pneumatic system, it is also the most traditional product.



Q24HD-□ (方头) plastic pilot



Q24HD₂-□ (方头) plastic pilot

型号注释 Order Code

Q 24 D H - 10

空气介质	medium: Air
二位四通	4/2 -ways
D: 单电控、D₂: 双电控	D: Single pilot solenoid control D₂: Double pilot solenoid control
Q: 单气控、Q₂: 双气控	Q: Single pilot air remote Q₂: Double pilot air remote
滑阀	spool valve
公称通径	Dia

技术参数 Specification

型号Type	Q24 DH-6(8) Q24D ₂ H-6(8) Q24QH-6(8) Q24Q ₂ H-6(8)	Q24 DH-10(15) Q24D ₂ H-10(15) Q24QH-10(15) Q24Q ₂ H-10(15)
参数parameter		
工作压力 Working pressure(MPa)	0.2-0.8	
工作电压 Voltage(V)	电控: AC220、110、36 DC48、24、12 [电压波动允许范围/rang+10%~-15%]	
工作温度 Working temp. (°C)	-5-50	
换向时间 Reversing changing time(sec)	0.04	0.06
泄漏量 Leakage rate(mL/min)	50	100
换向频率 Switch over frequency(Hz)	10	8
有效截面积S值 Effective sectional area(mm ²)	10(20)	40(60)
寿命 Life (万次)	≥ 150	