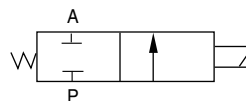


2W 二位二通直动式电磁阀

2/2-way Solenoid Valves



图形符号 symbols



产品特点 Features

采用膜片密封结构，动作灵敏，流量大，结构简单，维修容易，优良的防水性能。

With diaphragm seal, quick feedback, high flow, simple structure, easy of maintenance, excellent waterproof.

型号注释 Order Code

2W **025** - **08** **AC110V** - **E**

规格代码	Specification
2W: 二位二通电磁阀-直动式	2/2- way Solenoid valve--Direct Drive Type
2WH: 二位二通电磁阀-直动式(高压型)	2/2- way Solenoid valve-Direct Drive Type(High pressure Type)
2S: 不锈钢二位二通电磁阀-直动式	Stainless Steel 2/2- way Solenoid valve--Direct Drive Type
2SH: 二位二通电磁阀-直动式(高压型)	Stainless Steel 2/2- way Solenoid valve--Direct Drive Type(High pressure Type)

流量孔径 Aperture of Flow Rate : 012: 1.2mm, 020: 2mm, 025: 2.5mm, 040: 4mm

接管口径 Joint Pipe size: 06: 1/8", 08: 1/4", 10: 3/8"

标准电压 Standard Voltage: DC12V, DC24V, AC24V 50Hz/60Hz, AC110V 50Hz/60Hz, AC220V 50Hz/60Hz, AC380V 50Hz/60Hz

油封代号	Oil Seal Code
空白: NBR	NBR
E: EPDM(蒸汽用)	EPDM (for steam)
V: VITON(高温、瓦斯及真空用)	VITON (for high temperature gas and vacuum)

技术参数 Specification

型号 Model	2W025-06	2W025-08	2W040-10	2WH012-06	2WH012-08	2WH020-10
	2S025-06	2S025-08	2S040-10	2SH012-06	2SH012-08	2SH020-10
工作介质 Working Medium	空气、水、油、瓦斯/Air, Water, Oil, gas					
动作方式 Motion pattern	直动式 / Direct Drive Type					
型式 Type	常闭型 / Normal Close Type					
流量孔径 Aperture of Flow Rate	2.5		4	1.2		2
CV值 CV Value	0.23		0.60	0.05		0.15
接管口径 Joint Pipe Bore	1/8"	1/4"	3/8"	1/8"	1/4"	3/8"
使用流体粘滞度 Operation Fluid Viscosity	20 CST以下 (Below)					
使用压力 Working pressure	空气、水、油、瓦斯/Air, Water, Oil, gas: 0~0.7			空气、水、油/Air, Water, Oil: 0~0.7-0.1~1.5		
最大耐压力 Max. Pressure Resistance	1.0			3.5		
工作温度 Working temp. (°C)	-5~50					
使用电压范围 Voltage Range	± 10%					
本体材质 Body Material	2W: 黄铜 Brass			2S: 不锈钢 Stainless Steel		
油封材质 Oil Seal Material	NBR, EPDM 或 VITON / NBR, EPDM or VITON					